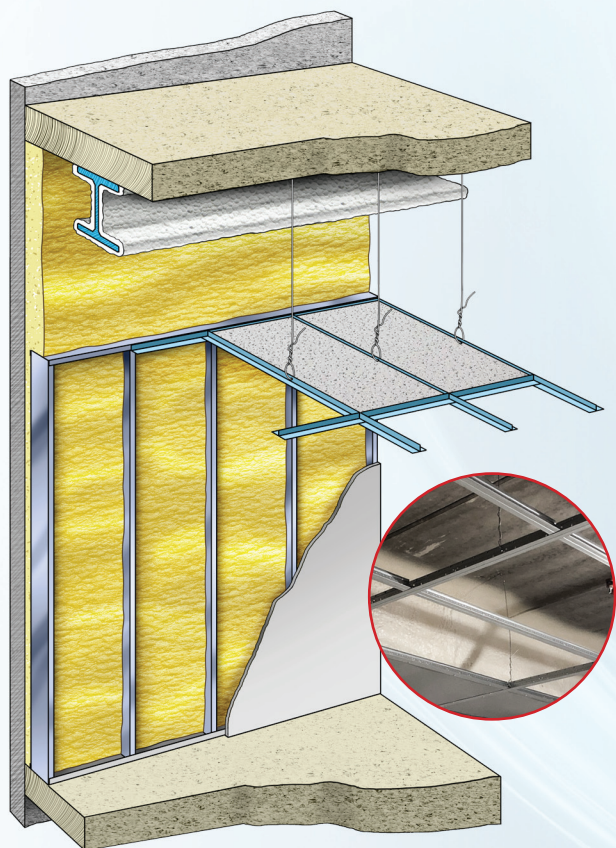


# Staycell ONE STEP® Spray Foam Insulation for Precast and Tilt-Up Construction

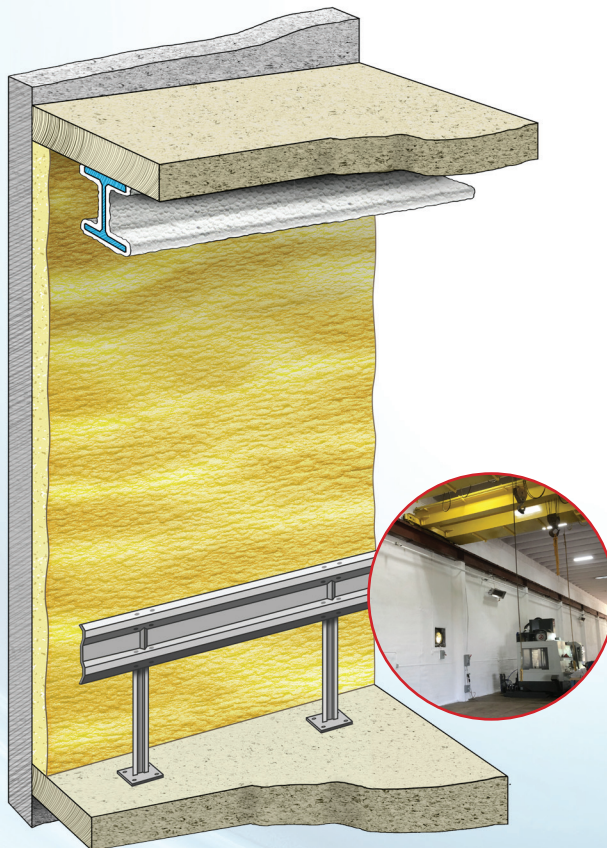
**NO FIRE-PROTECTIVE COVERINGS REQUIRED\***

**Cost-effective, superior performance compared to fiberglass and foam board insulation**

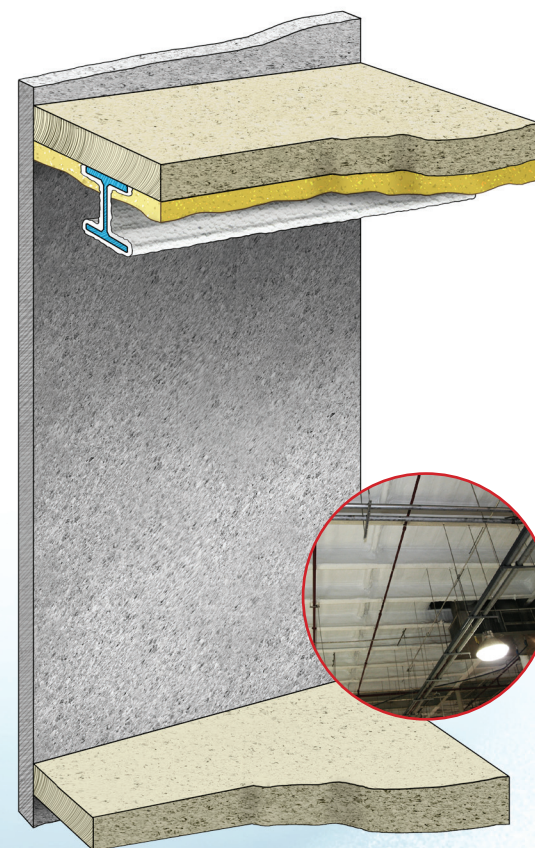
**Staycell ONE STEP®** eliminates costly installation of framing and gypsum board above ceilings.



**Staycell ONE STEP®** provides seamless insulation, air barrier and vapor retarder in a single product.



**Staycell ONE STEP®** insulates, controls condensation and moisture accumulation under concrete floor decks and roofs.



- Spray rates up to 1,000 square feet per hour per two-man crew
- Paintable for custom colors
- NFPA 285 compliant

\* Staycell ONE STEP® products comply with UL 1715 large-scale, fire test standard required by all editions of the International Building Code for exposed foam insulation.

**PSI**  
PREFERRED SOLUTIONS, INC.